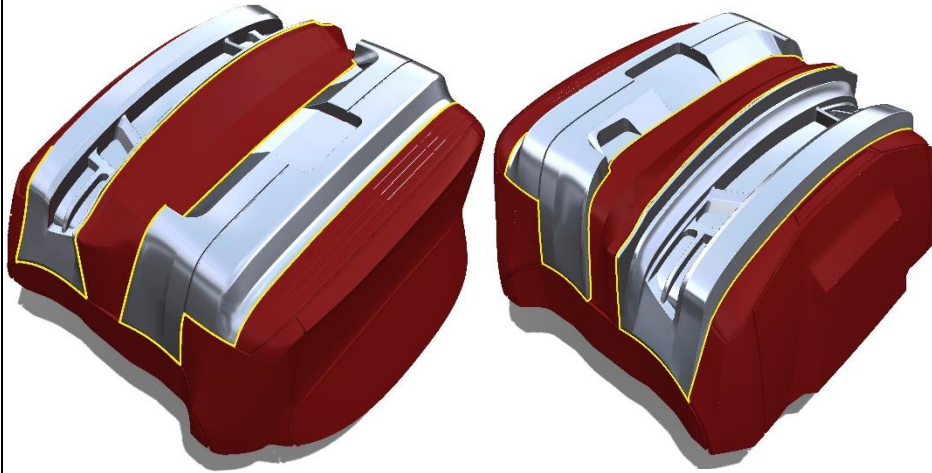


SEIJI S14 KOUKI (CUTTING AND GLUING GUIDE)



FOR THE BUMPERS,
STRICTLY CUT ALONG
THE **YELLOW** LINE
SHOWN. EVERYTHING IN
RED MUST BE CUT OFF.

THE BUMPERS GLUE
OVER THE **GREEN** AREA
ON THE MAINBODY
SHELL.



FOR THE MAIN BODY, CUT
ALONG THE **YELLOW** LINE;
EVERYTHING IN **RED** MUST BE
CAREFULLY CUT AWAY AND
SCRAPPED. ONLY THE REGIONS
IN GREY SHALL BE KEPT. THE
BUMPERS GLUE OVER THE
GREEN AREAS ON THE MAIN
BODY.

